

# ReportCentral™

High Performance Enterprise-Class Reporting & Analytics, Powerful and Easy to Use

## KEY FEATURES:

**Simplicity:** Easy installation and minimal administration with intuitive graphical interface

**Scalability:** High speed reporting supporting terabytes of data from multiple locations

**Full Integration:** Integrates with Microsoft's Active Directory™, Google and all other popular directory services

**Live Viewer:** Provides real-time visibility and analysis of web traffic and user activity

**One-Click Reporting:** Simply click "Report" to create a report from a dashboard view

**Multi-Tenancy Management:** Simple drag and drop interface to support multi-tenancy deployments

**Alerts:** Configure alerts for concerning user behavior or network activity

Gain visibility into your organization's web use as a whole—or view the activity of a single user (or group of users) at any point in time.

## Live and Historical Web Activity Reporting

Simple to use, ContentKeeper's ReportCentral provides high performance, reporting and analytics to monitor web use, ensure user safety and reduce security threats across all platforms and web browsers. Executive summary and forensic drill down reports can be quickly generated and distributed to ensure policy compliance.

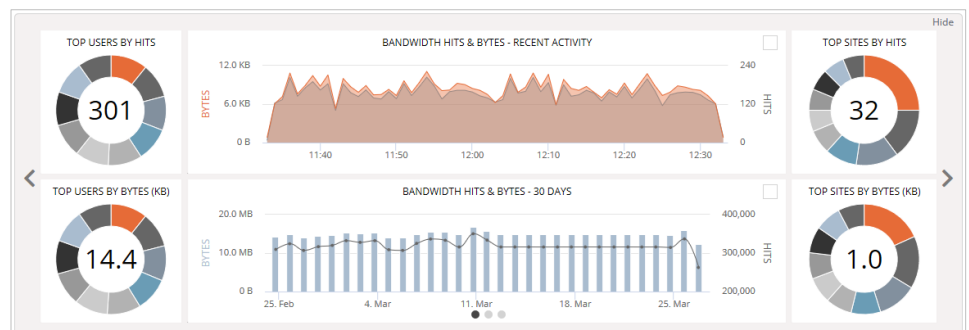
Because ContentKeeper provides reliable SSL inspection across all browsers and devices, organizations can get detailed visibility into all web activity on their networks. In addition, web traffic can be viewed in real-time to quickly analyze network threats and user activity.

## Advantages:

- Seamless reporting across *all* device types and browsers
- Detailed visibility into both real-time and historical data
- Comprehensive insight into all web traffic, including BYOD, IoT and guest networks
- Real-time monitoring, context analysis and alerting of suspicious online activity
- Reporting includes suspicious application and bandwidth use and malware activity
- Live viewer helps administrators troubleshoot and isolate network issues
- CIO and user dashboards provide analytics and critical details at a glance
- Streaming data ingestion allows quick access to reporting data
- Generate (and schedule) fully customizable or pre-formatted reports with one click
- Boolean logic enables the creation of more accurate and intelligent reports

## Comprehensive Reporting Functionality

Identify bandwidth hogs by username, device, domain and application. Generate summaries for individual users with a single click. Analyze potential malware breakouts and expose infected devices. Get real-time alerts when someone engages in dangerous or suspicious online behavior. See which websites, applications and devices are most popular—or which users have the most search term violations. ReportCentral gives organizations powerful insights to keep users safe from harm and networks running as efficiently as possible.



# FREE 30 DAY EVALUATION

Register at [ContentKeeper.com](http://ContentKeeper.com)

## Monitor, Manage, Secure and Report on all Web Activity

Provide the level of visibility and control required to protect your organization and users:

- Monitor web usage and security threats in real-time
- Get accurate reporting for all mobile platforms including Chromebooks, iPads, Windows, Mac and Android devices
- Manage Internet browsing activity
- Control browsing and minimize risk
- Secure your network and get real-time alerts for suspicious user or network activity
- Identify suspicious applications used to circumvent web filters
- Report on all web use within your organization to ensure policy compliance and optimize resource utilization
- Integrate with Microsoft® CASB to ensure enterprise-wide compliance
- Send logs to SIEM solutions for consolidated management of web activity

