

Microsoft® Cloud App Security + ContentKeeper Secure Internet Gateway. Better Together.

Send Information Rich Data Streams from ContentKeeper to Microsoft® CASB. Monitor Cloud App Usage and Compliance. Discover Shadow IT.

KEY FEATURES

Discover Shadow IT: Find out which apps are in use and who is using them.

Ensure whole enterprise compliance: Find non-compliant apps and replace them with sanctioned solutions.

Smooth Integration: ContentKeeper SIG integrates smoothly with all popular directory services including Active Directory.

Alerts: Get automatic and instant alerts for concerning user behavior or anomalous data movements.

A Uniquely Integrated CASB

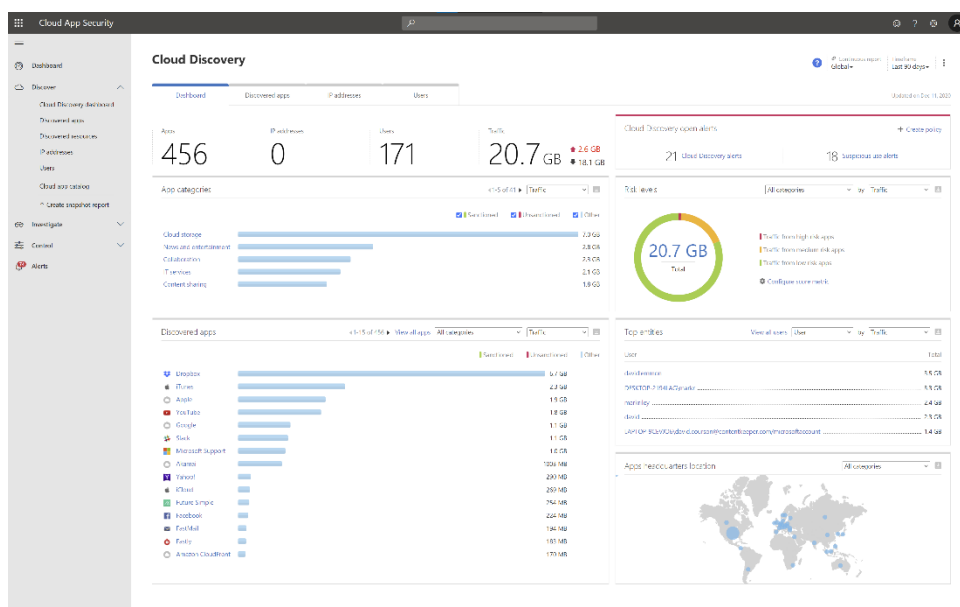
Microsoft Cloud App Security (MCAS) is a multimode Cloud Access Security Broker (CASB). It provides rich visibility and control over data travel and sophisticated analytics to identify and combat cyber threats across all your cloud services.

Microsoft's advanced database of app legality and compliance information from Cloud Access Security paired with ContentKeeper's high-speed data collection and security features is a powerful combination granting you the information and tools you need to stay on top of app use in your organization.

Addressing Shadow IT in your Organization:

- Discover all cloud apps and services used in your organization
- Assess the risk and compliance of your cloud apps
- Govern discovered cloud apps and explore enterprise-ready alternatives
- Enable continuous monitoring to automatically detect new and risky cloud apps
- Detect when data is being exfiltrated from your corporate apps
- Discover OAuth apps that have access to your environment

Gain visibility into your organization's app use in aggregate, or in detail at the individual user level.



An example of ContentKeeper data displayed in the Microsoft Cloud App Security Interface

FREE 30 DAY EVALUATION

Register at
ContentKeeper.com

Protect Your Information in the Cloud

- Gain visibility into corporate data stored in the cloud
- Enforce DLP and compliance policies for sensitive data stored in your cloud apps
- Ensure safe collaboration and data sharing practices in the cloud

Detect and Protect Against Cyber Threats

- Record an audit trail for all user activities across hybrid environments
- Identify compromised user accounts
- Detect threats from users inside your organization
- Detect threats from privileged accounts
- Identify and revoke access to risky OAuth apps
- Detect and remediate malware in your cloud apps

Assess and Protect Your IaaS Environment

- Audit the configuration of your IaaS environment
- Monitor user activity to protect against threats in your IaaS environment
- Capture user activity within custom cloud and on-premises apps

The screenshot shows the Microsoft Cloud App Security interface. The main section is titled "Cloud Discovery" and displays a table of discovered applications. The table has the following columns: App, Score, Traffic, Upload, Transactions, Users, IP addresses, Last seen (UTC), and Actions. The table lists 10 applications, all with a score of 10. The applications are: Microsoft 365 admin center, Microsoft Support, Microsoft Account, Microsoft Graph, Microsoft MSN, Microsoft Outlook Online, Microsoft Xbox, Microsoft Office Online, Azure DevOps Services, and Microsoft SharePoint Online. The interface also includes a sidebar with navigation options like Dashboard, Discover, Investigate, and Control, and a top navigation bar with options like Dashboard, Discovered apps, IP addresses, and Users.

| App | Score | Traffic | Upload | Transactions | Users | IP addresses | Last seen (UTC) | Actions |
|-----------------------------|-------|---------|--------|--------------|-------|--------------|-----------------|---------|
| Microsoft 365 admin center | 10 | 772 KB | 340 KB | 43 | 7 | 0 | Dec 11, 2020 | ✓ ⚙ |
| Microsoft Support | 10 | 1.0 GB | 4 MB | 9.4K (1.2K) | 61 | 0 | Dec 7, 2020 | ✓ ⚙ |
| Microsoft Account | 10 | 11 KB | 9 KB | 6 | 2 | 0 | Nov 25, 2020 | ✓ ⚙ |
| Microsoft Graph | 10 | 118 KB | 80 KB | 38 | 4 | 0 | Nov 18, 2020 | ✓ ⚙ |
| Microsoft MSN | 10 | 20 MB | 6 MB | 6.6K (9K) | 42 | 0 | Dec 11, 2020 | ✓ ⚙ |
| Microsoft Outlook Online | 10 | 36 MB | 5 MB | 2.4K | 12 | 0 | Dec 1, 2020 | ✓ ⚙ |
| Microsoft Xbox | 10 | 7 KB | 3 KB | 3 | 1 | 0 | Nov 12, 2020 | ✓ ⚙ |
| Microsoft Office Online | 10 | 32 MB | 20 MB | 1.6K (1K) | 33 | 0 | Dec 11, 2020 | ✓ ⚙ |
| Azure DevOps Services | 10 | 108 MB | 318 KB | 451 (1K) | 5 | 0 | Nov 18, 2020 | ✓ ⚙ |
| Microsoft SharePoint Online | 10 | 19 KB | 7 KB | 16 | 5 | 0 | Dec 11, 2020 | ✓ ⚙ |

Applications identified from the ContentKeeper data stream and displayed in the Microsoft Cloud App Security Interface